



AQUA - 040614
Shown in Canyon
3" wide by 3" high



PYRAMID - 040605
Shown in Coal
3" wide by 3" high



PLATEAU - 040611
Shown in Frost
2 7/8" wide by 2 7/8" high



RICHLEAU - 040602
Shown in Rustic
2 1/2" wide by 2 1/2" high



ROSETTE - 040606
Shown in Forge
3" wide by 3" high



DAISY - 040609
Shown in Crown
3" wide by 3" high



TERRA - 040610
Shown in Earth
3" wide by 3" high



SPIRO - 040613
Shown in Manchester
3" wide by 3" high



SULLIVAN - 040601
Shown in Canyon
3" wide by 3" high



MALTESE - 040612
Shown in Forge
2 3/4" wide by 2 3/4" high



EL SOL - 040608
Shown in Rustic
3" wide by 3" high



AZTEC - 040616
Shown in Coal
1 7/8" wide by 1 7/8" high



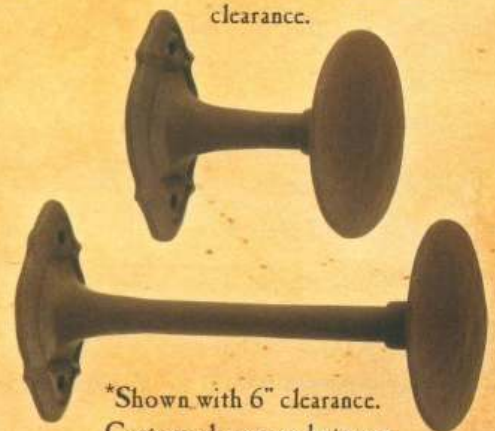
OBLONG ROSETTE - 040615
Shown in Manchester
2" wide by 3 1/4" high



SCROLL TAB (large) - 040618
Shown in Canyon
1/2" wide by 5 1/2" high



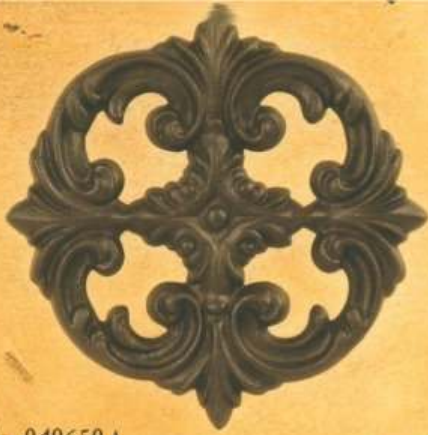
SCROLL TAB (small) - 040617
Shown in Frost
1/2" wide by 4" high



*Shown with standard 3" clearance.

*Shown with 6" clearance.
Custom clearances between 3" - 6" also available.

*Base is included with Tab Post. Select either a 3" or 6" clearance.



VEGA - 040650A
Shown in Canyon
6 1/2" wide by 6 1/2" high



EUROPA - 040652A
Shown in Rustic
4 1/8" wide by 4 1/8" high

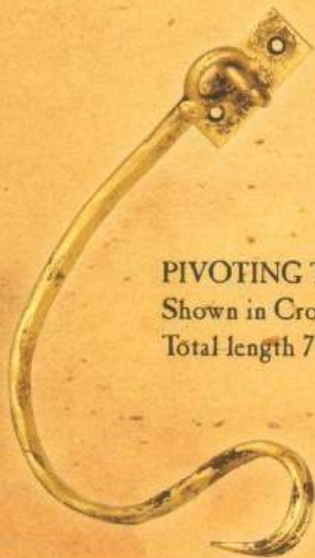
*Shown with standard adjustable base.



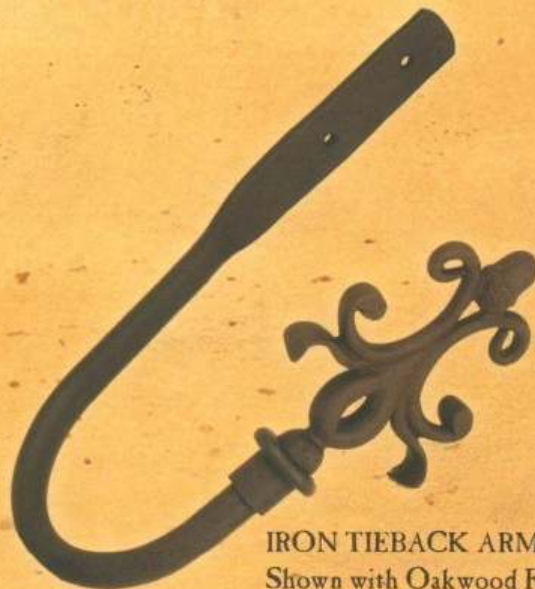
ANDROMEDA - 040653A
Shown in Manchester
3 1/2" wide by 9" high



POLARIS - 040651A
Shown in Forge
6 1/4" wide by 6 1/4" high



PIVOTING TIEBACK ARM - 040702
Shown in Crown
Total length 7" with 7" clearance



IRON TIEBACK ARM - 040701
Shown with Oakwood Finial (040208)
in Canyon, Order Finial Separately
Total length 11" with 5" clearance

*Adjustable base is included with Swag Holder.



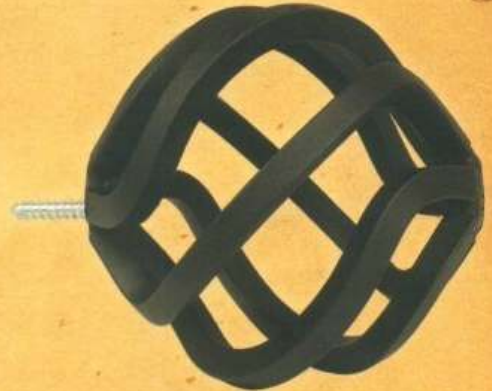
BELLAVISTA

Shown in Canyon
*See price list for variations
and part numbers

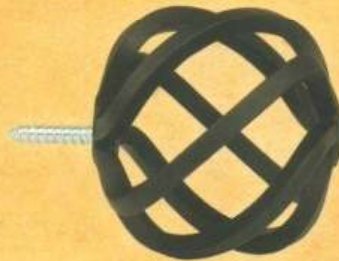


**HORIZONTAL FINIAL
MOUNT BRACKET - 040302A**

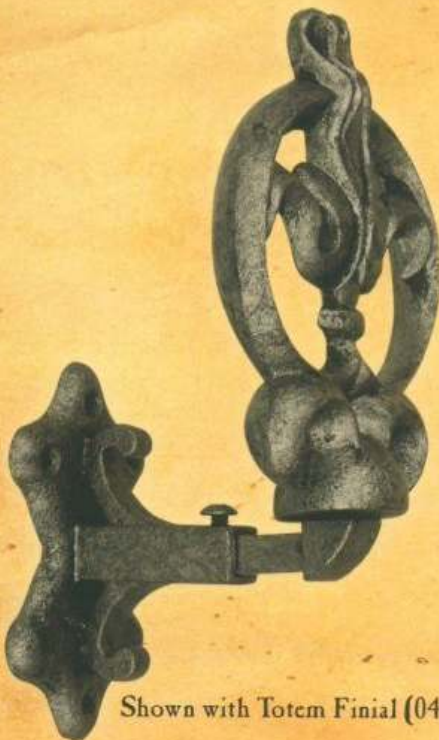
Shown with Large Globe Finial (040227)
in Manchester
*Order Finial Separately



**LARGE GLOBE FINIAL
with WOOD SCREW - 040227W**
Shown in Coal



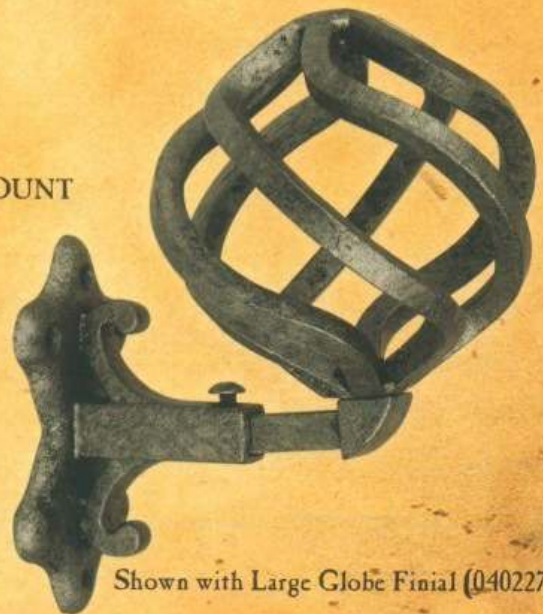
**SMALL GLOBE FINIAL
with WOOD SCREW - 040233W**
Shown in Coal



**VERTICAL FINIAL MOUNT
BRACKET - 040619A**

Shown in Forge
*Order Finial Separately

Shown with Totem Finial (040240)



Shown with Large Globe Finial (040227)

Finial mount options shown can be used with majority of finial designs.

MANCHESTER
(24)



COAL
(20)

FROST
(26)



RUSTIC
(23)

FORGE
(21)



EARTH
(25)

SEDONA
(28)



CANYON
(22)

IVY
(29)



CROWN
(2)